

# Butterfly valve S4 with worm gear actuator PP

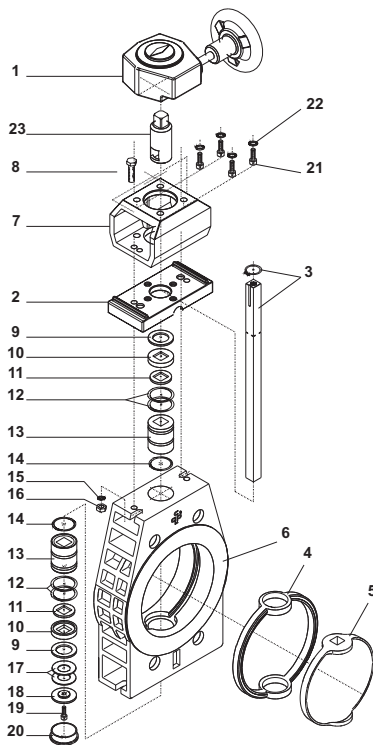
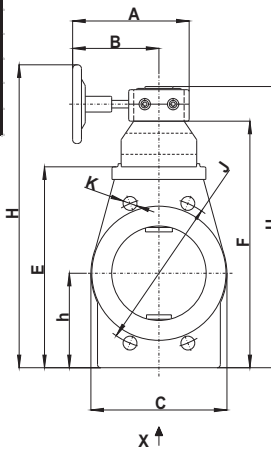
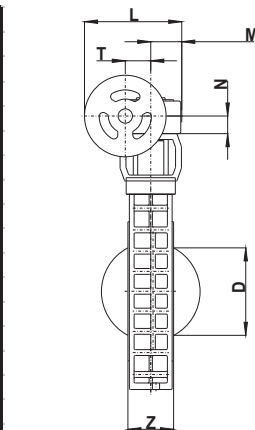
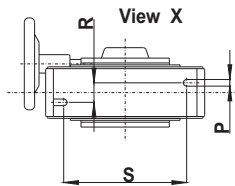
Code: 37



## Technical data

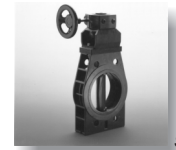
d	mm	90	110	140	160	225
DN	mm	80	100	125	150	200
G	zoll	3"	4"	5"	6"	8"
A	mm	183,0	183,0	183,0	183,0	183,0
B	mm	135,0	135,0	135,0	135,0	135,0
D	mm	74,5	91,5	116,5	134,0	200,5
C	mm	130,0	154,0	189,0	214,5	272,0
H	mm	384,0	414,0	449,0	477,0	548,0
F	mm	294,5	324,5	359,5	387,5	458,5
E	mm	222,0	252,0	287,0	315,0	386,0
h	mm	104,5	119,0	128,5	148,0	178,0
J	mm	152,5-160,0	180,0-190,5	210,0-216,0	240,0	295,0-298,0
K	mm	19,0 x 22,8	19,0 x 24,25	22,0 x 26,679	22,0	22,0
L	mm	148,0	148,0	148,0	148,0	148,0
M	mm	46,0	46,0	46,0	46,0	46,0
N	mm	27,0	27,0	27,0	27,0	27,0
Z	mm	49,0	56,0	64,0	70,0	71,0
P	mm	8,5	10,5	10,5	10,5	10,5
R	mm	10,0	10,0	10,0	16,0	22,0
S	mm	90,0	87,5	129,5	164,0	164,0
T	mm	39,0	39,0	39,0	39,0	39,0
U	mm	349,5	379,5	414,5	442,5	513,5
PN	bar	10,0	10,0	10,0	6,0	6,0
Antrieb		980,0	980,0	980,0	980,0	980,0

Dimensions in mm!



### Parts:

01. Worm gear
02. Cover plate
03. Shaft with snap ring
04. Body sealing EPDM or FPM
05. Disk
06. Body
07. Bracket
08. Screw
09. Shim
10. Steady bush out
11. Flatpacking
12. O-Ring
13. Steady bush in
14. O-Ring
15. Shim
16. Nut
17. Disk spring
18. Shim
19. Screw
20. Cover
21. Screw
22. Shim
23. Coupling



Symbolfoto

### Features:

- corrosion resistant
- long working life, maintenance free
- stainless and acid-resistant shaft

### General:

- Sealing material: EPDM / FPM
- Body material: PVC-u - **PP**
- Dimensions: DN 80 / d 90 - DN 200 / d 225

### Operating pressure:

- DN 80 / 3" - DN 125 / 5" **10 bar**
- DN 150 / 6" - DN 200 / 8" **6 bar**

### Connection:

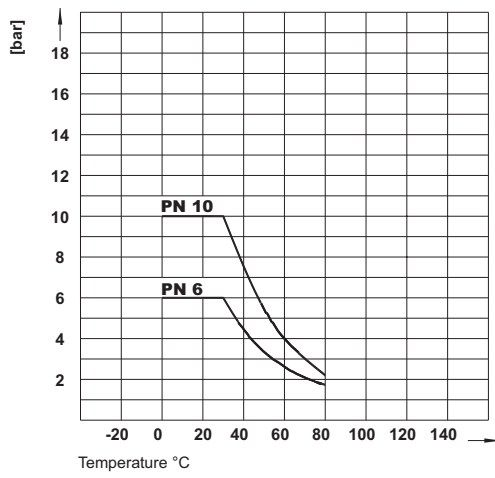
- Flange ANSI, ASA, DIN - DN 80 / 3" - DN 200 / 8"
- JIS - DN 80 / 3" - DN 150 / 6"

### Technical specification:

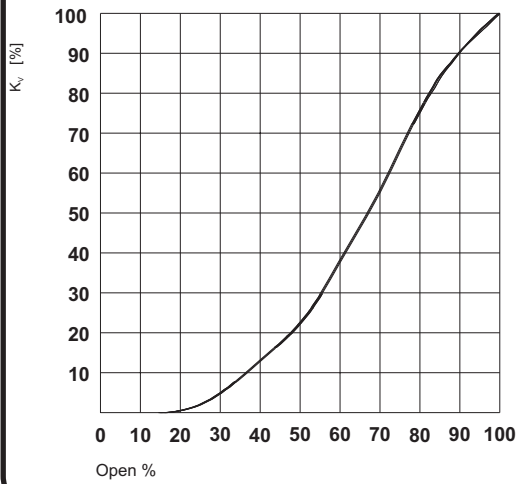
For example.:  
 TYPE PRAHER,  
 PP Butterfly valve S4 DN 80 d 90  
 With worm gear actuator  
 Sealing material FPM  
 Max. Operating pressure 10 bar

Subjects to technical modification!

Pressure - Temperature diagram



Flow characteristic



Torque

